

Overview

IPVision's Corner Mount is designed to be used on any exterior 90 degree wall.

Key Features

- 150 lb. load rating
- All aluminum construction
- Epoxy painted per Mil-P-53022-Type 1

Applications

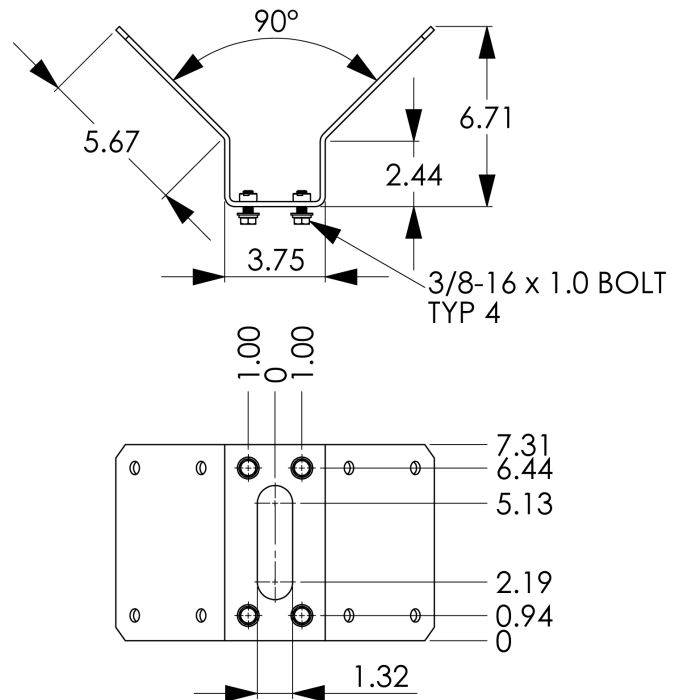
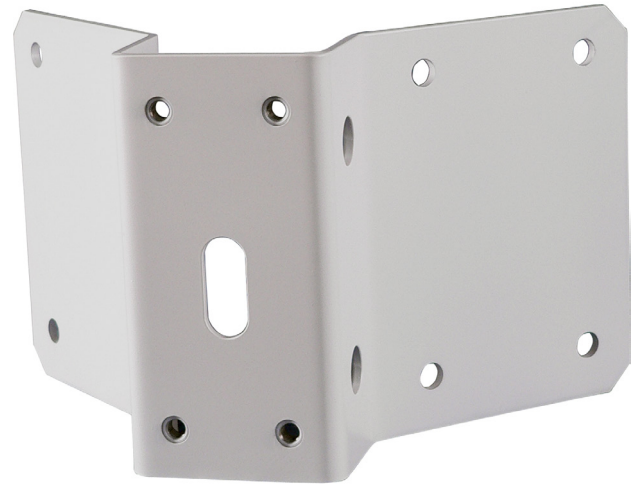
Mount to exterior 90 degree structure wall. Allows the use of additional camera mounts or direct mounting of a Dotworkz D2 series enclosure.

Shipping Specifications

Model	Unit Weight	Shipping Weight
IPV-0015-T-80	2.6 lbs	4 lbs

Product Attributes

Body Construction	Aluminum
Environment	Outdoor
Mount Style	Corner wall mount
RoHS	Yes
WEEE	Yes



*Product specifications are subject to change without notice.